



Datasheet UACC-OM-SFP28-SR

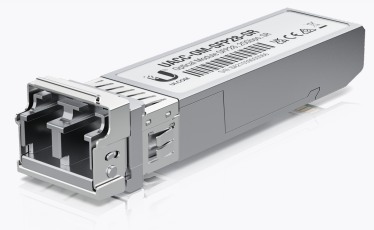
UniFi® Network



25 Gbps Multi-mode Optical Module

Short-range, SFP28-compatible optical transceiver module.

The 25 Gbps Multi-mode Optical Module is an optical transceiver capable of sustaining 25 Gbps throughput over a fiber connection. After connecting the module to a compatible fiber line, simply insert it into any SFP28 port to experience true 25 Gbps speed.



Specifications

Supported Media	Multi-Mode Fiber
Connector Type	(2) LC
TX Wavelength	Black Latch: 850 nm
RX Wavelength	Black Latch: 850 nm
Data Rate	25 Gbps
Max. Power Consumption	0.8W
Cable Distance	100 m
Operating Temperature	0 to 70° C (32 to 158° F)

WARNING CLASS 1 LASER PRODUCT, IEC/EN 60825-1:2014 – Do not look into the ends of the fiber optic cable or SFP module while converters are powered.



Specifications are subject to change. Ubiquiti products are sold with a limited warranty described at www.ui.com/support/warranty

©2021 Ubiquiti Inc. All rights reserved. Ubiquiti, Ubiquiti Networks, the Ubiquiti U logo, the Ubiquiti beam logo, UniFi, and UniFi Network are trademarks or registered trademarks of Ubiquiti Inc. in the United States and in other countries. All other trademarks are the property of their respective owners.