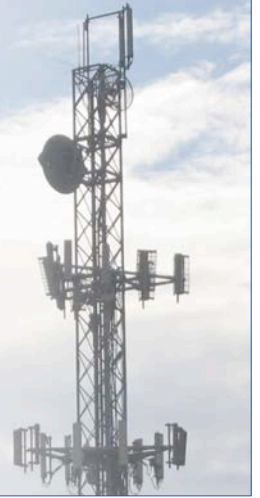




SuperRange4

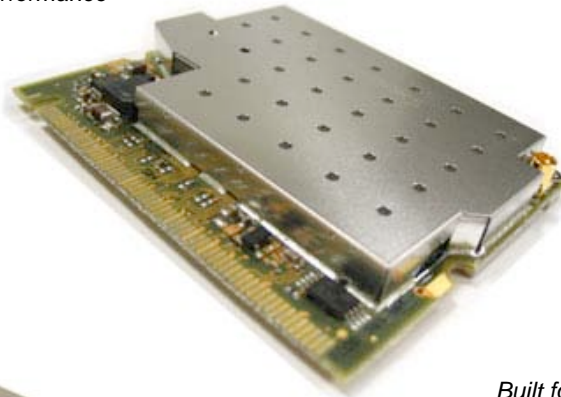
Public Safety 4.9GHz Modular Radio



The SuperRange4 is a powerful 4.9GHz mini-PCI card with FCC Part90Y modular approval. It achieves mask compliance at 400mW output power through an innovative amplifier design and also exhibits sensitivity and selectivity far beyond common 802.11 radios that have been simply shifted to operate in the 4.9GHz band. The SuperRange4 is compatible with Atheros Linux MADWIFI and has been proven in extreme temperature conditions.

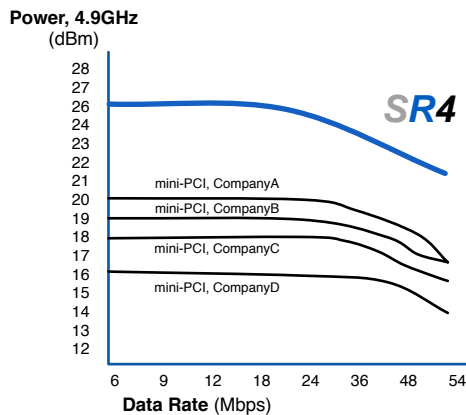
Hi-Performance PCB for Maximum RF Performance

MODULAR FCC PART90Y APPROVAL
Licensed for 4.9GHz Operation with up to 27dBi Gain Antenna

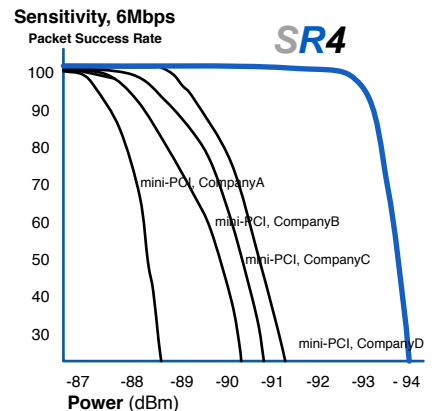


Built-in HeatSink for Temperature Performance

Built for Industrial / Rugged Applications



- | FEATURES |
|---------------------------|
| 400mW Output Power |
| FCC Part90Y Compliant |
| Industry-Best Sensitivity |
| Extended Temperature |
| Enhanced Filtering |
| 5/10/20/40 MHz Channels |
| MMCX Ant. Connector |



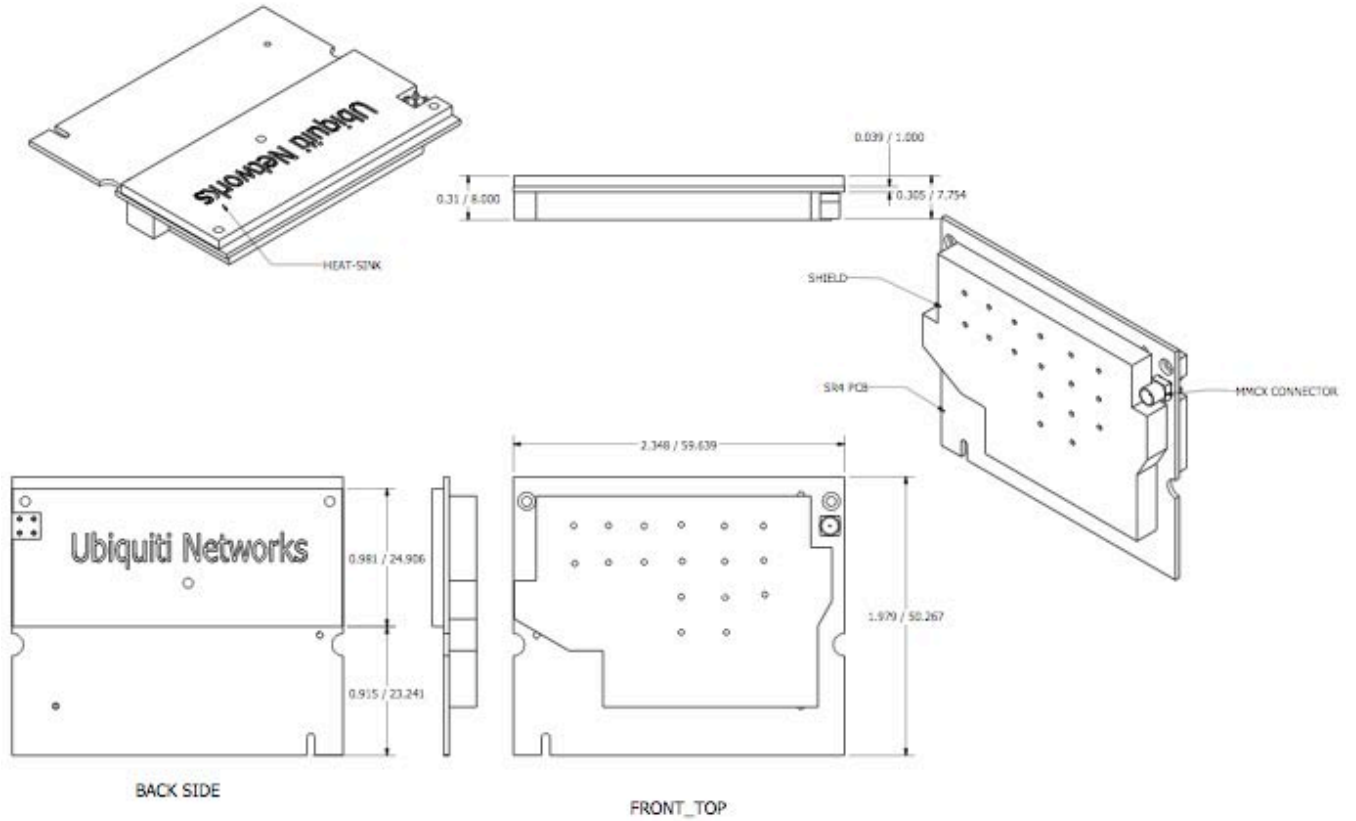
SuperRange4

TECHNICAL SPECIFICATIONS

CARD INFORMATION							
Radio Operation				Proprietary 4.9GHz based on OFDM 802.11a with QPSK/16QAM/64QAM			
Interface				32-bit Cardbus Type II			
Operation Voltage				3.3VDC			
Antenna Ports				Dual MMCX (Primary only required; secondary optional for diversity)			
Temperature Range				-40C to +80C (extended temp version up to +95C)			
Security				WPA, WPA2, AES-CCM & TKIP Encryption, 802.1x, 64/128/152bit WEP			
Data Rates				6Mbps, 9Mbps, 12Mbps, 24Mbps, 36Mbps, 48Mbps. 54Mbps			
RoHS Compliance				YES			
REGULATORY INFORMATION							
Wireless Modular Approvals				FCC PART90Y and Industry Canada. Approval covers antenna use up to 27dBi			
RADIO OPERATING FREQUENCY 4.94-4.99GHz							
TX SPECIFICATIONS				RX SPECIFICATIONS			
4.9GHz OFDM	DataRate	TX Power	Tolerance	4.9GHz OFDM	DataRate	Sensitivity	Tolerance
	6Mbps	26 dBm	+/-1.5dB		6Mbps	-94 dBm	+/-1.5dB
	9Mbps	26 dBm	+/-1.5dB		9Mbps	-93 dBm	+/-1.5dB
	12Mbps	26 dBm	+/-1.5dB		12Mbps	-91 dBm	+/-1.5dB
	18Mbps	26 dBm	+/-1.5dB		18Mbps	-90 dBm	+/-1.5dB
	24Mbps	26 dBm	+/-1.5dB		24Mbps	-86 dBm	+/-1.5dB
	36Mbps	24 dBm	+/-1.5dB		36Mbps	-83 dBm	+/-1.5dB
	48Mbps	23 dBm	+/-1.5dB		48Mbps	-77 dBm	+/-1.5dB
54Mbps	22 dBm	+/-1.5dB	54Mbps	-74 dBm	+/-1.5dB		
CURRENT CONSUMPTION INFORMATION							
TX CURRENT CONSUMPTION				RX CURRENT CONSUMPTION			
4.9GHz OFDM	DataRate	Current	Tolerance	4.9GHz OFDM	DataRate	Current	Tolerance
	6Mbps	1.60 A	+/-100 mA		6Mbps	300 mA	+/-100 mA
	9Mbps	1.60 A	+/-100 mA		9Mbps	300 mA	+/-100 mA
	12Mbps	1.60 A	+/-100 mA		12Mbps	300 mA	+/-100 mA
	18Mbps	1.60 A	+/-100 mA		18Mbps	300 mA	+/-100 mA
	24Mbps	1.60 A	+/-100 mA		24Mbps	300 mA	+/-100 mA
	36Mbps	1.30 A	+/-100 mA		36Mbps	300 mA	+/-100 mA
	48Mbps	1.10 A	+/-100 mA		48Mbps	300 mA	+/-100 mA
54Mbps	1.00 A	+/-100 mA	54Mbps	300 mA	+/-100 mA		
4.9GHz PUBLIC SAFETY FREQUENCY CHANNEL SUPPORT							
Frequency	5MHz	10MHz	20MHz	Frequency	5MHz	10MHz	20MHz
4942.5 MHz				4967.5 MHz			
4945.0 MHz				4970.0 MHz			
4947.5 MHz				4972.5 MHz			
4950.0 MHz				4975.0 MHz			
4952.5 MHz				4980.0 MHz			
4957.5 MHz				4982.5 MHz			
4960.0 MHz				4985.0 MHz			
4962.5 MHz				4987.5 MHz			
4965.0 MHz							
RANGE PERFORMANCE							
Indoor (Antenna Dependent):				Up to 100meters			
Outdoor (Antenna Dependent):				Over 1km			
DRIVER INFORMATION							
Operating System Support				Linux MADWIFI, WindowsXP, Windows2000			
Advanced Mobility / QuickHandoff				WindowsXP/2000 Utility with Enhanced Mobility Driver from Ubiquiti			
Cisco Support				CCX 4.0 Supported Driver/Utility also available from Ubiquiti			
For help with MADWIFI or other Special Driver Support, Please e-mail support@ubnt.com							

SuperRange4

MECHANICAL DIMENSIONS



495-499 Montague Expwy.
Milpitas, CA 95035
T (408)-942-3085
F (408)-351-4973
<http://www.ubnt.com>