


Test Report issued under the responsibility of:MET Laboratories, Inc.
© Copyright 2008

TEST REPORT EN 60950-1:2006 Information technology equipment – Safety – Part 1: General requirements	
Report Reference No.	81509
Date of issue	September 21, 2009
Total number of pages	49 pages
CB Testing Laboratory	MET Laboratories, Inc.
Address	914 West Patapsco Ave, Baltimore, MD 21230, USA
Applicant's name	Ubiquiti Networks
Address	495-499 Montague EXPWY, Milpitas CA. 95035
Manufacturer's name	Ubiquiti Networks
Address	495-499 Montague EXPWY, Milpitas CA. 95035
Factory's name	Ubiquiti Networks
Address	495-499 Montague EXPWY, Milpitas CA. 95035
Test specification:	
Standard	<input checked="" type="checkbox"/> EN 60950-1:2006
Test procedure	CE
Non-standard test method	N/A
Test Report Form No.	EN60950_1C
Test Report Form(s) Originator	SGS Fimko Ltd
Master TRF	Dated 2007-06
Test item description	Outdoor Wireless Bridge, M2 and M5.
Trade Mark	
Manufacturer	Ubiquiti Networks
Model/Type reference	M2 (2.4 GHz), and M5 (5GHz)
Ratings	Input: 100-240VAC, 50-60Hz, 0.3A. (Provided by Listed Limited Power Source (LPS) Power Adaptor) Output: 15V, 0.4A.

Testing procedure and testing location:			
<input checked="" type="checkbox"/> CE Testing Laboratory: Testing location/ address : Tested by (name + signature)..... : Approved by (+ signature)..... :	MET Laboratories, Inc. 914 West Patapsco Ave, Baltimore MD 21230, USA Shaima Adin Rick Cooper		
<input checked="" type="checkbox"/> Associated CE Laboratory: Testing location/ address : Tested by (name + signature)..... :	MET Laboratories, Inc. 33439 Western Ave. Union City, CA 94587 Shaima Adin		
<input type="checkbox"/> Testing procedure: WMT Tested by (name + signature)..... : Witnessed by (+ signature) : Approved by (+ signature)..... : Testing location/ address :			
Summary of testing- Tests performed (name of test and test clause):			
1.7.13	Marking Durability Test		
1.6.2	Input Current Test		
4.5.1	Temperature Test		
Summary of compliance with National Differences: The products covered by this report have been found to be in compliance with the applicable requirements of the following countries: AT, AU, BE, BR, CH, DE, DK, ES, FI, FR, GB, IE, IT, JP, KR, NL, NO, PL, SE, SG, & SL.			
Copy of marking plate: M2:			
<table border="1" style="width: 100%; border-collapse: collapse;"> <tr> <td style="width: 30%; padding: 10px; vertical-align: top;"> <div style="font-size: 2em; font-weight: bold; margin-bottom: 5px;">M2</div> <div>Ubiquiti Networks</div> <div style="font-size: 0.8em;">www.ubnt.com</div> </td> <td style="width: 70%; padding: 10px; vertical-align: top;"> <div style="font-size: 0.9em;">FCC ID: SWX-M2 IC: 6545A-M2</div> <div style="font-weight: bold; margin-top: 10px;">This device complies with Part15 of FCC rules.</div> <div style="font-size: 0.8em;">Operation is subject to the following two conditions:</div> <div style="margin-top: 10px;"> 1.) This device may not cause harmful interference and, 2.) This device must accept any interference received, including interference that may cause undesired operation </div> </td> </tr> </table>		<div style="font-size: 2em; font-weight: bold; margin-bottom: 5px;">M2</div> <div>Ubiquiti Networks</div> <div style="font-size: 0.8em;">www.ubnt.com</div>	<div style="font-size: 0.9em;">FCC ID: SWX-M2 IC: 6545A-M2</div> <div style="font-weight: bold; margin-top: 10px;">This device complies with Part15 of FCC rules.</div> <div style="font-size: 0.8em;">Operation is subject to the following two conditions:</div> <div style="margin-top: 10px;"> 1.) This device may not cause harmful interference and, 2.) This device must accept any interference received, including interference that may cause undesired operation </div>
<div style="font-size: 2em; font-weight: bold; margin-bottom: 5px;">M2</div> <div>Ubiquiti Networks</div> <div style="font-size: 0.8em;">www.ubnt.com</div>	<div style="font-size: 0.9em;">FCC ID: SWX-M2 IC: 6545A-M2</div> <div style="font-weight: bold; margin-top: 10px;">This device complies with Part15 of FCC rules.</div> <div style="font-size: 0.8em;">Operation is subject to the following two conditions:</div> <div style="margin-top: 10px;"> 1.) This device may not cause harmful interference and, 2.) This device must accept any interference received, including interference that may cause undesired operation </div>		

M5:

M5

Ubiquiti
Networks

www.ubnt.com

FCCID: SWX-M5

IC: 6545A-M5

This device complies with Part15 of FCC rules.

Operation is subject to the following two conditions:

- 1.) This device may not cause harmful interference and,
- 2.) This device must accept any interference received,
including interference that may cause undesired operation

Test item particulars	
Equipment mobility	Stationary
Connection to the mains	Not directly connected to mains
Operating condition	Continuous
Access location	Operator accessible
Over voltage category (OVC)	Other: DC
Mains supply tolerance (%) or absolute mains supply values	+ 20%, -15%
Tested for IT power systems	No
IT testing, phase-phase voltage (V)	N/A
Class of equipment	Class III
Considered current rating (A)	0.4A
Pollution degree (PD)	PD 2
IP protection class	IPX0
Altitude during operation (m)	14 m
Altitude of test laboratory (m)	14 m
Mass of equipment (kg)	0.5Kg
Possible test case verdicts:	
- test case does not apply to the test object	N/A
- test object does meet the requirement	P (Pass)
- test object does not meet the requirement	F (Fail)
Testing	
Date of receipt of test item	June 22, 2009
Date(s) of performance of tests	July 15, 2009

General remarks:

The test results presented in this report relate only to the object tested.

This report shall not be reproduced, except in full, without the written approval of the Issuing testing laboratory.

"(See Enclosure #)" refers to additional information appended to the report.

"(See appended table)" refers to a table appended to the report.

Note: This TRF includes EN Group Differences together with National Differences and Special National Conditions, if any. All Differences are located in the Appendix to the main body of this TRF.

Throughout this report a comma (point) is used as the decimal separator.


- The product is stationary, Class III (unearthed).
- Product is not certified for outdoor used in this certification. Pollution Degree II
- Power to units is supplied from Listed Adapter
- A suitable disconnect device should be part of building installation.
- Unit is not intended for restricted access area only.
- The equipment was submitted and tested for a maximum manufacturer recommended ambient temperature of 75°C.

General product information:**M2 and M5:**

- An outdoor wireless bridge product using 802.11n MIMO IC solution from Atheros Communications. The device is built around the AR7240 400MHz MIPS 24K processor featuring built in Ethernet 10/100 Phy. The design features 32MB of RAM, 8MB flash and a 40MHz crystal used for the entire system. The AR9280 11n 2x2 radio IC is connected to the AR7240 through its PCI-E bus. The AR9280 is attached to a dual 2.4GHz radio front end; one for each MIMO chain. Each radio front end consists of band pass filters, a transmit power amplifier, a receive low-noise amplifier, and a RF switch. The AR9280 is capable of speeds up to 300Mbps using new 802.11n modulation coding schemes and leveraging spatial multiplexing of dual antenna streams. The power amplifiers in each chain send a feedback vs. power value to the AR9280 which enables it to control power output accurately.

EN 60950-1			
Clause	Requirement + Test	Result - Remark	Verdict
1	GENERAL		P
1.5	Components		P
1.5.1	General		P
	Comply with IEC 60950-1 or relevant component standard	(see appended table 1.5.1)	P
1.5.2	Evaluation and testing of components	Components certified to IEC harmonized Standards and checked for correct application. Components not certified are used in accordance with their ratings and they comply with applicable parts of IEC60950 and the relevant component Standards.	P
1.5.3	Thermal controls	No such thermal controls.	N/A
1.5.4	Transformers	No transformers incorporated in the Unit.	N/A
1.5.5	Interconnecting cables	No such interconnecting cables part of the evaluation	N/A
1.5.6	Capacitors bridging insulation	Part of Part of Listed power supply.	P
1.5.7	Resistors bridging insulation	Part of Part of Listed power supply.	P
1.5.7.1	Resistors bridging functional, basic or supplementary insulation	Part of Part of Listed power supply	P
1.5.7.2	Resistors bridging double or reinforced insulation between a.c. mains and other circuits	Part of Part of Listed power supply	P
1.5.7.3	Resistors bridging double or reinforced insulation between a.c. mains and antenna or coaxial cable	No bridging between AC mains and antenna.	N/A
1.5.8	Components in equipment for IT power systems	Not for IT power systems.	N/A
1.5.9	Surge suppressors	No Surge suppressors.	N/A
1.5.9.1	General		N/A
1.5.9.2	Protection of VDRs		N/A
1.5.9.3	Bridging of functional insulation by a VDR		N/A
1.5.9.4	Bridging of basic insulation by a VDR		N/A
1.5.9.5	Bridging of supplementary, double or reinforced insulation by a VDR		N/A
1.6	Power interface		P
1.6.1	AC power distribution systems	DC unit.	P

EN 60950-1			
Clause	Requirement + Test	Result - Remark	Verdict
1.6.2	Input current	(see appended table 1.6.2) Test performed	P
1.6.3	Voltage limit of hand-held equipment	Not hand held.	N/A
1.6.4	Neutral conductor		N/A

1.7	Marking and instructions		P
1.7.1	Power rating		P
	Rated voltage(s) or voltage range(s) (V)	15VDC, 0.4A	P
	Symbol for nature of supply, for d.c. only	No symbol required.	N/A
	Rated frequency or rated frequency range (Hz) ...	DC powered equipment	N/A
	Rated current (mA or A)	0.4A,	P
	Manufacturer's name or trade-mark or identification mark		P
	Model identification or type reference	M2 (2.4 GHz) and M5 (5GHz)	P
	Symbol for Class II equipment only	Class III equipment	N/A
	Other markings and symbols		N/A
1.7.2	Safety instructions and marking	Operating/safety instruction addressed in manual.	P
1.7.2.1	General	Operating/safety instruction addressed in manual.	P
1.7.2.2	Disconnect devices	Part of the building installation.	P
1.7.2.3	Overcurrent protective device	Part of building installation.	P
1.7.2.4	IT power distribution systems	Not connected to IT Power systems.	N/A
1.7.2.5	Operator access with a tool		N/A
1.2.7.6	Ozone	No Ozone	N/A
1.7.3	Short duty cycles	Unit is for continuous operation.	N/A
1.7.4	Supply voltage adjustment	Auto range, part of the listed adapter.	P
	Methods and means of adjustment; reference to installation instructions		N/A
1.7.5	Power outlets on the equipment	No power outlet.	N/A
1.7.6	Fuse identification (marking, special fusing characteristics, cross-reference)	Not provided.	N/A
1.7.7	Wiring terminals	Not used	N/A
1.7.7.1	Protective earthing and bonding terminals	Class III equipment.	N/A

EN 60950-1			
Clause	Requirement + Test	Result - Remark	Verdict
1.7.7.2	Terminals for a.c. mains supply conductors	DC unit.	N/A
1.7.7.3	Terminals for d.c. mains supply conductors		N/A
1.7.8	Controls and indicators	There are no controls or indicators effecting safety	N/A
1.7.8.1	Identification, location and marking :	None used	N/A
1.7.8.2	Colours :	None used	N/A
1.7.8.3	Symbols according to IEC 60417 :	None used	N/A
1.7.8.4	Markings using figures :		N/A
1.7.9	Isolation of multiple power sources :		N/A
1.7.10	Thermostats and other regulating devices :	None used	N/A
1.7.11	Durability	Test performed	P
1.7.12	Removable parts	None used	N/A
1.7.13	Replaceable batteries :	No battery	N/A
	Language(s) :		—
1.7.14	Equipment for restricted access locations :		N/A

EN 60950-1			
Clause	Requirement + Test	Result - Remark	Verdict
2	PROTECTION FROM HAZARDS		P
2.1	Protection from electric shock and energy hazards		P
2.1.1	Protection in operator access areas	No electric shock or energy hazard. All voltage levels are at SELV level. All voltage levels are at 15VDC.	P
2.1.1.1	Access to energized parts	No electric shock or energy hazard. All voltage levels are at SELV level. All voltage levels are at 15VDC.	P
	Test by inspection		P
	Test with test finger (Figure 2A)		N/A
	Test with test pin (Figure 2B)		N/A
	Test with test probe (Figure 2C)		N/A
2.1.1.2	Battery compartments	No battery compartments	N/A
2.1.1.3	Access to ELV wiring	No ELV Wiring	N/A
	Working voltage (V _{peak} or V _{rms}); minimum distance through insulation (mm)	(see appended table 2.10.5)	—
2.1.1.4	Access to hazardous voltage circuit wiring	No hazardous voltage circuit wiring .	P
2.1.1.5	Energy hazards	No electric shock or energy hazard. All voltage levels are at SELV level. All voltage levels are at 15VDC.	P
2.1.1.6	Manual controls	No manual controls.	N/A
2.1.1.7	Discharge of capacitors in equipment		N/A
	Measured voltage (V); time-constant (s).....		—
2.1.1.8	Energy hazards – d.c. mains supply	Not connected to the DC main.	NA
	a) Capacitor connected to the d.c. mains supply ..	Does not have such a capacitor	N/A
	b) Internal battery connected to the d.c. mains supply		N/A
2.1.1.9	Audio amplifiers		N/A
2.1.2	Protection in service access areas	No electric shock or energy hazard. All voltage levels are at SELV level. All voltage levels are at 15VDC.	P
2.1.3	Protection in restricted access locations	Unit is not intended for installation in restricted access locations.	N/A

EN 60950-1			
Clause	Requirement + Test	Result - Remark	Verdict

2.2	SELV circuits		P
2.2.1	General requirements		P
2.2.2	Voltages under normal conditions (V) :	SELV	P
2.2.3	Voltages under fault conditions (V) :	SELV	P
2.2.4	Connection of SELV circuits to other circuits :	SELV to SELV	P

2.3	TNV circuits	No TNV	N/A
2.3.1	Limits		N/A
	Type of TNV circuits..... :		—
2.3.2	Separation from other circuits and from accessible parts		N/A
2.3.2.1	General requirements		N/A
2.3.2.2	Protection by basic insulation		N/A
2.3.2.3	Protection by earthing		N/A
2.3.2.4	Protection by other constructions :		N/A
2.3.3	Separation from hazardous voltages		N/A
	Insulation employed :		—
2.3.4	Connection of TNV circuits to other circuits		N/A
	Insulation employed :		—
2.3.5	Test for operating voltages generated externally		N/A

2.4	Limited current circuits		N/A
2.4.1	General requirements	Unit not evaluated for limiting current circuit.	N/A
2.4.2	Limit values		N/A
	Frequency (Hz) :		—
	Measured current (mA) :		—
	Measured voltage (V)..... :		—
	Measured circuit capacitance (nF or μ F) :		—
2.4.3	Connection of limited current circuits to other circuits		N/A

2.5	Limited power sources		P
	a) Inherently limited output	Power supply adaptor is listed L.P.S.	P
	b) Impedance limited output		N/A

EN 60950-1			
Clause	Requirement + Test	Result - Remark	Verdict
	c) Regulating network limited output under normal operating and single fault condition		N/A
	d) Overcurrent protective device limited output		N/A
	Max. output voltage (V), max. output current (A), max. apparent power (VA)..... :		—
	Current rating of overcurrent protective device (A) .. :		—

2.6	Provisions for earthing and bonding No protective earthing or bonding. Unit is Power Over Ethernet. Grounding provided by Listed Power Supply		N/A
2.6.1	Protective earthing		N/A
2.6.2	Functional earthing		N/A
2.6.3	Protective earthing and protective bonding conductors		N/A
2.6.3.1	General		N/A
2.6.3.2	Size of protective earthing conductors		N/A
	Rated current (A), cross-sectional area (mm ²), AWG..... :		—
2.6.3.3	Size of protective bonding conductors		N/A
	Rated current (A), cross-sectional area (mm ²), AWG..... :		—
	Protective current rating (A), cross-sectional area (mm ²), AWG..... :		—
2.6.3.4	Resistance of earthing conductors and their terminations; resistance (Ω), voltage drop (V), test current (A), duration (min)..... :		N/A
2.6.3.5	Colour of insulation..... :		N/A
2.6.4	Terminals		N/A
2.6.4.1	General		N/A
2.6.4.2	Protective earthing and bonding terminals		N/A
	Rated current (A), type, nominal thread diameter (mm)..... :		—
2.6.4.3	Separation of the protective earthing conductor from protective bonding conductors		N/A
2.6.5	Integrity of protective earthing		N/A
2.6.5.1	Interconnection of equipment		N/A
2.6.5.2	Components in protective earthing conductors and protective bonding conductors		N/A
2.6.5.3	Disconnection of protective earth		N/A
2.6.5.4	Parts that can be removed by an operator		N/A

EN 60950-1			
Clause	Requirement + Test	Result - Remark	Verdict
2.6.5.5	Parts removed during servicing		N/A
2.6.5.6	Corrosion resistance		N/A
2.6.5.7	Screws for protective bonding		N/A
2.6.5.8	Reliance on telecommunication network or cable distribution system		

2.7	Overcurrent and earth fault protection in primary circuits Not a primary circuit.		N/A
2.7.1	Basic requirements		N/A
	Instructions when protection relies on building installation		N/A
2.7.2	Faults not simulated in 5.3.7		N/A
2.7.3	Short-circuit backup protection		N/A
2.7.4	Number and location of protective devices		N/A
2.7.5	Protection by several devices		N/A
2.7.6	Warning to service personnel		N/A

2.8	Safety interlocks	None included.	N/A
2.8.1	General principles		N/A
2.8.2	Protection requirements		N/A
2.8.3	Inadvertent reactivation		N/A
2.8.4	Fail-safe operation		N/A
2.8.5	Moving parts		N/A
2.8.6	Overriding		N/A
2.8.7	Switches and relays		N/A
2.8.7.1	Contact gaps (mm)		N/A
2.8.7.2	Overload test		N/A
2.8.7.3	Endurance test		N/A
2.8.7.4	Electric strength test	(see appended table 5.2)	N/A
2.8.8	Mechanical actuators		N/A

2.9	Electrical insulation		P
2.9.1	Properties of insulating materials	Natural rubber, materials containing asbestos and hygroscopic materials are not used as insulation.	P
2.9.2	Humidity conditioning		N/A

EN 60950-1			
Clause	Requirement + Test	Result - Remark	Verdict
	Relative humidity (%), temperature (°C)		—
2.9.3	Grade of insulation	Functional	P
2.9.4	Separation from hazardous voltages		N/A
	Method(s) used		—

2.10	Clearances, creepage distances and distances through insulation.		P
2.10.1	General	Functional insulation	P
2.10.1.1	Frequency	DC Unit	N/A
2.10.1.2	Pollution degrees	2	P
2.10.1.3	Reduced values for functional insulation		N/A
2.10.1.4	Intervening unconnected conductive parts		N/A
2.10.1.5	Insulation with varying dimensions		N/A
2.10.1.6	Special separation requirements		N/A
2.10.1.7	Insulation in circuits generating starting pulses		N/A
2.10.2	Determination of working voltage	15VDC	P
2.10.2.1	General		N/A
2.10.2.2	RMS working voltage		N/A
2.10.2.3	Peak working voltage		N/A
2.10.3	Clearances	Functional insulation	P
2.10.3.1	General		P
2.10.3.2	Mains transient voltages		N/A
	a) AC mains supply		N/A
	b) Earthed d.c. mains supplies	15VDC	P
	c) Unearthed d.c. mains supplies		N/A
	d) Battery operation		N/A
2.10.3.3	Clearances in primary circuits	Not primary circuit	N/A
2.10.3.4	Clearances in secondary circuits	(see appended table 2.10.3 and 2.10.4)	P
2.10.3.5	Clearances in circuits having starting pulses	(see appended table 2.10.3 and 2.10.4) Unit is intended for continuous operation	N/A
2.10.3.6	Transients from a.c. mains supply	Not a.c. equipment	N/A
2.10.3.7	Transients from d.c. mains supply	Not directly connected to Mains supply	N/A
2.10.3.8	Transients from telecommunication networks and cable distribution systems	No TNV Circuitry.	N/A

EN 60950-1			
Clause	Requirement + Test	Result - Remark	Verdict
2.10.3.9	Measurement of transient voltage levels		N/A
	a) Transients from a mains supply		N/A
	For an a.c. mains supply	Not a.c. equipment	N/A
	For a d.c. mains supply	Not directly connected to Mains supply	N/A
	b) Transients from a telecommunication network :	No TNV Circuitry.	N/A
2.10.4	Creepage distances		P
2.10.4.1	General		P
2.10.4.2	Material group and comparative tracking index	Material group IIIb is assumed to be used.	N/A
	CTI tests	Material group IIIb is assumed to be used	—
2.10.4.3	Minimum creepage distances	(see appended table 2.10.3 and 2.10.4)	N/A
2.10.5	Solid insulation	No solid insulation is employed.	N/A
2.10.5.1	General		N/A
2.10.5.2	Distances through insulation	(see appended table 2.10.5)	N/A
2.10.5.3	Insulating compound as solid insulation		N/A
2.10.5.4	Semiconductor devices		N/A
2.10.5.5	Cemented joints	(see appended table 2.10.3 and 2.10.4)	N/A
2.10.5.6	Thin sheet material – General		N/A
2.10.5.7	Separable thin sheet material		N/A
	Number of layers (pcs).....		—
2.10.5.8	Non-separable thin sheet material		N/A
2.10.5.9	Thin sheet material – standard test procedure		N/A
	Electric strength test	(see appended table 2.10.5)	—
2.10.5.10	Thin sheet material – alternative test procedure		N/A
	Electric strength test	(see appended table 2.10.5)	—
2.10.5.11	Insulation in wound components	No such components	N/A
2.10.5.12	Wire in wound components	No such components.	N/A
	Working voltage		N/A
	a) Basic insulation not under stress		N/A
	b) Basic, supplementary, reinforced insulation		N/A
	c) Compliance with Annex U		N/A
	Two wires in contact inside wound component; angle between 45° and 90°		N/A

EN 60950-1			
Clause	Requirement + Test	Result - Remark	Verdict
2.10.5.13	Wire with solvent-based enamel in wound components		N/A
	Electric strength test	(see appended table 2.10.5)	—
	Routine test		N/A
2.10.5.14	Additional insulation in wound components		N/A
	Working voltage		N/A
	- Basic insulation not under stress		N/A
	- Supplementary, reinforced insulation		N/A
2.10.6	Construction of printed boards		N/A
2.10.6.1	Uncoated printed boards	(see appended table 2.10.3 and 2.10.4)	N/A
2.10.6.2	Coated printed boards	(see appended table 2.10.3 and 2.10.4)	N/A
2.10.6.3	Insulation between conductors on the same inner surface of a printed board	(see appended table 2.10.3 and 2.10.4)	N/A
2.10.6.4	Insulation between conductors on different layers of a printed board		N/A
	Distance through insulation	(see appended table 2.10.5)	N/A
	Number of insulation layers (pcs)		N/A
2.10.7	Component external terminations	(see appended table 2.10.3 and 2.10.4)	N/A
2.10.8	Tests on coated printed boards and coated components	No such components.	N/A
2.10.8.1	Sample preparation and preliminary inspection		N/A
2.10.8.2	Thermal conditioning		N/A
2.10.8.3	Electric strength test	(see appended table 5.2)	N/A
2.10.8.4	Abrasion resistance test		N/A
2.10.9	Thermal cycling		N/A
2.10.10	Test for Pollution Degree 1 environment and insulating compound	Not for pollution Degree 1.	N/A
2.10.11	Tests for semiconductor devices and cemented joints		N/A
2.10.12	Enclosed and sealed parts		N/A

EN 60950-1			
Clause	Requirement + Test	Result - Remark	Verdict
3	WIRING, CONNECTIONS AND SUPPLY		P
3.1	General		P
3.1.1	Current rating and overcurrent protection	No internal wiring	N/A
3.1.2	Protection against mechanical damage	No wire ways.	N/A
3.1.3	Securing of internal wiring	No internal wiring	N/A
3.1.4	Insulation of conductors	(see appended table 5.2)	N/A
3.1.5	Beads and ceramic insulators		N/A
3.1.6	Screws for electrical contact pressure		N/A
3.1.7	Insulating materials in electrical connections	Functional Insulation.	P
3.1.8	Self-tapping and spaced thread screws	No screws.	N/A
3.1.9	Termination of conductors	No terminations.	N/A
	10 N pull test		N/A
3.1.10	Sleeving on wiring		N/A
3.2	Connection to a mains supply		N/A
	Equipment is not directly connected to mains.		
3.2.1	Means of connection		N/A
3.2.1.1	Connection to an a.c. mains supply		N/A
3.2.1.2	Connection to a d.c. mains supply	Not connected to a DC mains Supply	N/A
3.2.2	Multiple supply connections		N/A
3.2.3	Permanently connected equipment		N/A
	Number of conductors, diameter of cable and conduits (mm)		—
3.2.4	Appliance inlets	No appliance inlets.	N/A
3.2.5	Power supply cords	DC unit.	N/A
3.2.5.1	AC power supply cords	DC unit.	N/A
	Type		—
	Rated current (A), cross-sectional area (mm ²), AWG		—
3.2.5.2	DC power supply cords	Unit is Power Over Ethernet	N/A
3.2.6	Cord anchorages and strain relief		N/A
	Mass of equipment (kg), pull (N)		—
	Longitudinal displacement (mm)		—
3.2.7	Protection against mechanical damage		N/A
3.2.8	Cord guards	No such cord guards.	N/A

EN 60950-1			
Clause	Requirement + Test	Result - Remark	Verdict
	Diameter or minor dimension D (mm); test mass (g)		—
	Radius of curvature of cord (mm)		—
3.2.9	Supply wiring space		N/A

3.3	Wiring terminals for connection of external conductors		N/A
3.3.1	Wiring terminals	No wiring terminal. Power is provided to the equipment through ethernet connection from AC Listed Power Supply	N/A
3.3.2	Connection of non-detachable power supply cords		N/A
3.3.3	Screw terminals		N/A
3.3.4	Conductor sizes to be connected		N/A
	Rated current (A), cord/cable type, cross-sectional area (mm ²)		—
3.3.5	Wiring terminal sizes		N/A
	Rated current (A), type, nominal thread diameter (mm)		—
3.3.6	Wiring terminal design		N/A
3.3.7	Grouping of wiring terminals		N/A
3.3.8	Stranded wire		N/A

3.4	Disconnection from the mains supply		P
	Not directly connected to mains		
3.4.1	General requirement		N/A
3.4.2	Disconnect devices	Ethernet line.	P
3.4.3	Permanently connected equipment		N/A
3.4.4	Parts which remain energized		N/A
3.4.5	Switches in flexible cords		N/A
3.4.6	Number of poles - single-phase and d.c. equipment		N/A
3.4.7	Number of poles - three-phase equipment		N/A
3.4.8	Switches as disconnect devices		N/A
3.4.9	Plugs as disconnect devices		N/A
3.4.10	Interconnected equipment		N/A
3.4.11	Multiple power sources		N/A

3.5	Interconnection of equipment		P
3.5.1	General requirements	SELV to SELV	P

EN 60950-1			
Clause	Requirement + Test	Result - Remark	Verdict
3.5.2	Types of interconnection circuits :	SELV to SELV	P
3.5.3	ELV circuits as interconnection circuits	No ELV circuits.	N/A
3.5.4	Data ports for additional equipment		P

EN 60950-1			
Clause	Requirement + Test	Result - Remark	Verdict
4	PHYSICAL REQUIREMENTS		P
4.1	Stability		N/A
	Angle of 10°		N/A
	Test force (N) :		N/A
4.2	Mechanical strength		P
4.2.1	General	1- SELV circuit 2-No energy hazard, less than 15 VA	P
4.2.2	Steady force test, 10 N		N/A
4.2.3	Steady force test, 30 N		N/A
4.2.4	Steady force test, 250 N	No energy hazard could be projected if the enclosure does not sustain steady force test.	N/A
4.2.5	Impact test	No energy hazard could be projected if the enclosure does not sustain impact test.	N/A
	Fall test		N/A
	Swing test		N/A
4.2.6	Drop test; height (mm) :	Not hand held.	N/A
4.2.7	Stress relief test		N/A
4.2.8	Cathode ray tubes	No CRT's.	N/A
	Picture tube separately certified :	(see separate test report or attached certificate)	N/A
4.2.9	High pressure lamps	No such lamps.	N/A
4.2.10	Wall or ceiling mounted equipment; force (N) :		N/A
4.3	Design and construction		P
4.3.1	Edges and corners	Edges and corners are rounded and smooth.	P
4.3.2	Handles and manual controls; force (N) :	No handles.	N/A
4.3.3	Adjustable controls	No such controls.	N/A
4.3.4	Securing of parts	By screws.	P
4.3.5	Connection by plugs and sockets		N/A
4.3.6	Direct plug-in equipment	Not a direct plug in equipment	N/A
	Torque :		—

EN 60950-1			
Clause	Requirement + Test	Result - Remark	Verdict
	Compliance with the relevant mains plug standard		N/A
4.3.7	Heating elements in earthed equipment	No heating elements.	N/A
4.3.8	Batteries	No Battery.	N/A
	- Overcharging of a rechargeable battery	No rechargeable battery	N/A
	- Unintentional charging of a non-rechargeable battery		N/A
	- Reverse charging of a rechargeable battery	No rechargeable battery	N/A
	- Excessive discharging rate for any battery		N/A
4.3.9	Oil and grease	No Internal wiring	N/A
4.3.10	Dust, powders, liquids and gases	Equipment does not produce dust	N/A
4.3.11	Containers for liquids or gases	No containers	N/A
4.3.12	Flammable liquids	No flammable liquids	N/A
	Quantity of liquid (l)		N/A
	Flash point (°C)		N/A
4.3.13	Radiation	No radiation	N/A
4.3.13.1	General		N/A
4.3.13.2	Ionizing radiation		N/A
	Measured radiation (pA/kg)		—
	Measured high-voltage (kV)		—
	Measured focus voltage (kV)		—
	CRT markings		—
4.3.13.3	Effect of ultraviolet (UV) radiation on materials	No UV radiation	N/A
	Part, property, retention after test, flammability classification		N/A
4.3.13.4	Human exposure to ultraviolet (UV) radiation	No UV radiation	N/A
4.3.13.5	Laser (including LEDs)	No laser components	N/A
	Laser class		—
4.3.13.6	Other types		N/A
4.4	Protection against hazardous moving parts	No such moving parts	N/A
4.4.1	General		N/A
4.4.2	Protection in operator access areas		N/A
4.4.3	Protection in restricted access locations		N/A
4.4.4	Protection in service access areas		N/A

EN 60950-1			
Clause	Requirement + Test	Result - Remark	Verdict
4.5	Thermal requirements		P
4.5.1	General	Conducting test.	P
4.5.2	Temperature tests		P
	Normal load condition per Annex L :		—
4.5.3	Temperature limits for materials	(see appended table 4.5)	P
4.5.4	Touch temperature limits	(see appended table 4.5)	N/A
4.5.5	Resistance to abnormal heat :	(see appended table 4.5.5)	N/A
4.6	Openings in enclosures		N/A
4.6.1	Top and side openings	No openings in the enclosure.	N/A
	Dimensions (mm) :		—
4.6.2	Bottoms of fire enclosures	Complete with no openings.	N/A
	Construction of the bottom, dimensions (mm) ... :		—
4.6.3	Doors or covers in fire enclosures	No such doors or covers.	N/A
4.6.4	Openings in transportable equipment	Complete with no openings.	N/A
4.6.4.1	Constructional design measures		N/A
	Dimensions (mm) :		—
4.6.4.2	Evaluation measures for larger openings	Complete with no openings.	N/A
4.6.4.3	Use of metallized parts		N/A
4.6.5	Adhesives for constructional purposes	No adhesives.	N/A
	Conditioning temperature (°C), time (weeks) :		—
4.7	Resistance to fire		P
4.7.1	Reducing the risk of ignition and spread of flame	Listed power supply, output less than 15 VA. Electrical enclosure.	P
	Method 1, selection and application of components wiring and materials	(see appended table 4.7)	P
	Method 2, application of all of simulated fault condition tests	(see appended table 5.3)	N/A
4.7.2	Conditions for a fire enclosure	Less than 15 VA	P
4.7.2.1	Parts requiring a fire enclosure	None	N/A
4.7.2.2	Parts not requiring a fire enclosure	Connectors filling holes in the enclosure.	P
4.7.3	Materials		P
4.7.3.1	General	The propagation of fire is limited through the selection of materials.	P

EN 60950-1			
Clause	Requirement + Test	Result - Remark	Verdict
4.7.3.2	Materials for fire enclosures	Listed power supply.	P
4.7.3.3	Materials for components and other parts outside fire enclosures	Components are mounted on the PWB rated 94V-0.	P
4.7.3.4	Materials for components and other parts inside fire enclosures	Part of listed power supply.	P
4.7.3.5	Materials for air filter assemblies	No air filter	N/A
4.7.3.6	Materials used in high-voltage components	No high-voltage components.	N/A

5	ELECTRICAL REQUIREMENTS AND SIMULATED ABNORMAL CONDITIONS		N/A
5.1	Touch current and protective conductor current		N/A
5.1.1	General	Unit is DC powered.	N/A
5.1.2	Configuration of equipment under test (EUT)		N/A
5.1.2.1	Single connection to an a.c. mains supply		N/A
5.1.2.2	Redundant multiple connections to an a.c. mains supply		N/A
5.1.2.3	Simultaneous multiple connections to an a.c. mains supply		N/A
5.1.3	Test circuit		N/A
5.1.4	Application of measuring instrument		N/A
5.1.5	Test procedure		N/A
5.1.6	Test measurements		N/A
	Supply voltage (V)		—
	Measured touch current (mA)		—
	Max. allowed touch current (mA)		—
	Measured protective conductor current (mA)		—
	Max. allowed protective conductor current (mA) ..		—
5.1.7	Equipment with touch current exceeding 3,5 mA		N/A
5.1.7.1	General		N/A
5.1.7.2	Simultaneous multiple connections to the supply		N/A
5.1.8	Touch currents to telecommunication networks and cable distribution systems and from telecommunication networks		N/A
5.1.8.1	Limitation of the touch current to a telecommunication network or to a cable distribution system		N/A
	Supply voltage (V)		—
	Measured touch current (mA)		—

EN 60950-1			
Clause	Requirement + Test	Result - Remark	Verdict
	Max. allowed touch current (mA) :		—
5.1.8.2	Summation of touch currents from telecommunication networks		N/A
	a) EUT with earthed telecommunication ports :		N/A
	b) EUT whose telecommunication ports have no reference to protective earth		N/A

5.2	Electric strength		N/A
5.2.1	General	(see appended table 5.2)	N/A
5.2.2	Test procedure		N/A

5.3	Abnormal operating and fault conditions		N/A
5.3.1	Protection against overload and abnormal operation	(see appended table 5.3)	N/A
5.3.2	Motors	(see appended Annex B)	N/A
5.3.3	Transformers	(see appended Annex C)	N/A
5.3.4	Functional insulation :		N/A
5.3.5	Electromechanical components		N/A
5.3.6	Audio amplifiers in ITE :		N/A
5.3.7	Simulation of faults		N/A
5.3.8	Unattended equipment		N/A
5.3.9	Compliance criteria for abnormal operating and fault conditions		N/A
5.3.9.1	During the tests		N/A
5.3.9.2	After the tests		N/A

EN 60950-1			
Clause	Requirement + Test	Result - Remark	Verdict
6	CONNECTION TO TELECOMMUNICATION NETWORKS No connection to Telecommunication Networks.		N/A
6.1	Protection of telecommunication network service persons, and users of other equipment connected to the network, from hazards in the equipment		N/A
6.1.1	Protection from hazardous voltages		N/A
6.1.2	Separation of the telecommunication network from earth		N/A
6.1.2.1	Requirements	(see appended table 5.2)	N/A
	Supply voltage (V)		—
	Current in the test circuit (mA)		—
6.1.2.2	Exclusions		N/A
6.2	Protection of equipment users from overvoltages on telecommunication networks		N/A
6.2.1	Separation requirements		N/A
6.2.2	Electric strength test procedure		N/A
6.2.2.1	Impulse test	(see appended table 5.2)	N/A
6.2.2.2	Steady-state test	(see appended table 5.2)	N/A
6.2.2.3	Compliance criteria		N/A
6.3	Protection of the telecommunication wiring system from overheating		N/A
	Max. output current (A)		—
	Current limiting method		—

EN 60950-1			
Clause	Requirement + Test	Result - Remark	Verdict
7	CONNECTION TO CABLE DISTRIBUTION SYSTEMS No connection to Cabel Distribution Systems.		N/A
7.1	General		N/A
7.2	Protection of cable distribution system service persons, and users of other equipment connected to the system, from hazardous voltages in the equipment		N/A
7.3	Protection of equipment users from overvoltages on the cable distribution system		N/A
7.4	Insulation between primary circuits and cable distribution systems		N/A
7.4.1	General		N/A
7.4.2	Voltage surge test	(see appended table 5.2)	N/A
7.4.3	Impulse test	(see appended table 5.2)	N/A

EN 60950-1			
Clause	Requirement + Test	Result - Remark	Verdict
A	ANNEX A, TESTS FOR RESISTANCE TO HEAT AND FIRE		N/A
A.1	Flammability test for fire enclosures of movable equipment having a total mass exceeding 18 kg, and of stationary equipment (see 4.7.3.2)	Plastic enclosure. Electrical enclosure.	N/A
A.1.1	Samples		—
	Wall thickness (mm).....		—
A.1.2	Conditioning of samples; temperature (°C)		N/A
A.1.3	Mounting of samples		N/A
A.1.4	Test flame (see IEC 60695-11-3)		N/A
	Flame A, B, C or D		—
A.1.5	Test procedure		N/A
A.1.6	Compliance criteria		N/A
	Sample 1 burning time (s).....		—
	Sample 2 burning time (s).....		—
	Sample 3 burning time (s).....		—
A.2	Flammability test for fire enclosures of movable equipment having a total mass not exceeding 18 kg, and for material and components located inside fire enclosures (see 4.7.3.2 and 4.7.3.4)		N/A
A.2.1	Samples, material		—
	Wall thickness (mm).....		—
A.2.2	Conditioning of samples; temperature (°C)		N/A
A.2.3	Mounting of samples		N/A
A.2.4	Test flame (see IEC 60695-11-4)		N/A
	Flame A, B or C		—
A.2.5	Test procedure		N/A
A.2.6	Compliance criteria		N/A
	Sample 1 burning time (s).....		—
	Sample 2 burning time (s).....		—
	Sample 3 burning time (s).....		—
A.2.7	Alternative test acc. to IEC 60695-11-5, cl. 5 and 9		N/A
	Sample 1 burning time (s).....		—
	Sample 2 burning time (s).....		—
	Sample 3 burning time (s).....		—
A.3	Hot flaming oil test (see 4.6.2)		N/A
A.3.1	Mounting of samples		N/A
A.3.2	Test procedure		N/A

EN 60950-1			
Clause	Requirement + Test	Result - Remark	Verdict
A.3.3	Compliance criterion		N/A

B	ANNEX B, MOTOR TESTS UNDER ABNORMAL CONDITIONS (see 4.7.2.2 and 5.3.2)		N/A
	No motor incorporated.		
B.1	General requirements		N/A
	Position		—
	Manufacturer		—
	Type		—
	Rated values		—
B.2	Test conditions		N/A
B.3	Maximum temperatures	(see appended table 5.3)	N/A
B.4	Running overload test	(see appended table 5.3)	N/A
B.5	Locked-rotor overload test		N/A
	Test duration (days)		—
	Electric strength test: test voltage (V)		—
B.6	Running overload test for d.c. motors in secondary circuits		N/A
B.6.1	General		N/A
B.6.2	Test procedure		N/A
B.6.3	Alternative test procedure		N/A
B.6.4	Electric strength test; test voltage (V)		N/A
B.7	Locked-rotor overload test for d.c. motors in secondary circuits		N/A
B.7.1	General		N/A
B.7.2	Test procedure		N/A
B.7.3	Alternative test procedure		N/A
B.7.4	Electric strength test; test voltage (V)		N/A
B.8	Test for motors with capacitors	(see appended table 5.3)	N/A
B.9	Test for three-phase motors	(see appended table 5.3)	N/A
B.10	Test for series motors		N/A
	Operating voltage (V)		—

C	ANNEX C, TRANSFORMERS (see 1.5.4 and 5.3.3)		N/A
	No transformers outside the AC Listed Power Supply		
	Position		—

EN 60950-1			
Clause	Requirement + Test	Result - Remark	Verdict
	Manufacturer		—
	Type		—
	Rated values		—
	Method of protection		—
C.1	Overload test	(see appended table 5.3)	N/A
C.2	Insulation	(see appended table 5.2)	N/A
	Protection from displacement of windings		N/A

D	ANNEX D, MEASURING INSTRUMENTS FOR TOUCH-CURRENT TESTS (see 5.1.4) DC Equipment. Less than 48VDC.		N/A
D.1	Measuring instrument		N/A
D.2	Alternative measuring instrument		N/A

E	ANNEX E, TEMPERATURE RISE OF A WINDING (see 1.4.13)		N/A
---	-----------------------------------------------------	--	-----

F	ANNEX F, MEASUREMENT OF CLEARANCES AND CREEPAGE DISTANCES (see 2.10 and Annex G)		N/A
---	-------------------------------------------------------------------------------------	--	-----

G	ANNEX G, ALTERNATIVE METHOD FOR DETERMINING MINIMUM CLEARANCES		N/A
G.1	Clearances		N/A
G.1.1	General		N/A
G.1.2	Summary of the procedure for determining minimum clearances		N/A
G.2	Determination of mains transient voltage (V)		N/A
G.2.1	AC mains supply		N/A
G.2.2	Earthed d.c. mains supplies		N/A
G.2.3	Unearthed d.c. mains supplies		N/A
G.2.4	Battery operation		N/A
G.3	Determination of telecommunication network transient voltage (V)		N/A
G.4	Determination of required withstand voltage (V)		N/A
G.4.1	Mains transients and internal repetitive peaks		N/A
G.4.2	Transients from telecommunication networks		N/A
G.4.3	Combination of transients		N/A
G.4.4	Transients from cable distribution systems		N/A

EN 60950-1			
Clause	Requirement + Test	Result - Remark	Verdict
G.5	Measurement of transient voltages (V)		N/A
	a) Transients from a mains supply		N/A
	For an a.c. mains supply		N/A
	For a d.c. mains supply		N/A
	b) Transients from a telecommunication network		N/A
G.6	Determination of minimum clearances		N/A
H	ANNEX H, IONIZING RADIATION (see 4.3.13)		N/A
J	ANNEX J, TABLE OF ELECTROCHEMICAL POTENTIALS (see 2.6.5.6) Considered.		N/A
	Metal(s) used		—
K	ANNEX K, THERMAL CONTROLS (see 1.5.3 and 5.3.8) No thermal controls.		N/A
K.1	Making and breaking capacity		N/A
K.2	Thermostat reliability; operating voltage (V)		N/A
K.3	Thermostat endurance test; operating voltage (V)		N/A
K.4	Temperature limiter endurance; operating voltage (V)		N/A
K.5	Thermal cut-out reliability		N/A
K.6	Stability of operation	(see appended table 5.3)	N/A
L	ANNEX L, NORMAL LOAD CONDITIONS FOR SOME TYPES OF ELECTRICAL BUSINESS EQUIPMENT (see 1.2.2.1 and 4.5.2)		P
L.1	Typewriters		N/A
L.2	Adding machines and cash registers		N/A
L.3	Erasers		N/A
L.4	Pencil sharpeners		N/A
L.5	Duplicators and copy machines		N/A
L.6	Motor-operated files		N/A
L.7	Other business equipment		P
M	ANNEX M, CRITERIA FOR TELEPHONE RINGING SIGNALS (see 2.3.1) No TNV Circuitry.		N/A
M.1	Introduction		N/A

EN 60950-1			
Clause	Requirement + Test	Result - Remark	Verdict
M.2	Method A		N/A
M.3	Method B		N/A
M.3.1	Ringing signal		N/A
M.3.1.1	Frequency (Hz)		—
M.3.1.2	Voltage (V)		—
M.3.1.3	Cadence; time (s), voltage (V)		—
M.3.1.4	Single fault current (mA)		—
M.3.2	Tripping device and monitoring voltage		N/A
M.3.2.1	Conditions for use of a tripping device or a monitoring voltage		N/A
M.3.2.2	Tripping device		N/A
M.3.2.3	Monitoring voltage (V)		N/A
N	ANNEX N, IMPULSE TEST GENERATORS (see 1.5.7.2, 1.5.7.3, 2.10.3.9, 6.2.2.1, 7.3.2, 7.4.3 and Clause G.5) Unit is intended for continuous operation		N/A
N.1	ITU-T impulse test generators		N/A
N.2	IEC 60065 impulse test generator		N/A
P	ANNEX P, NORMATIVE REFERENCES Informative.		—
Q	ANNEX Q, Voltage dependent resistors (VDRs) (see 1.5.9.1) No VDRs.		N/A
	a) Preferred climatic categories		N/A
	b) Maximum continuous voltage		N/A
	c) Pulse current		N/A
R	ANNEX R, EXAMPLES OF REQUIREMENTS FOR QUALITY CONTROL PROGRAMMES		N/A
R.1	Minimum separation distances for unpopulated coated printed boards (see 2.10.6.2)		N/A
R.2	Reduced clearances (see 2.10.3)		N/A
S	ANNEX S, PROCEDURE FOR IMPULSE TESTING (see 6.2.2.3) Unit is intended for continuous operation		N/A
S.1	Test equipment		N/A

EN 60950-1			
Clause	Requirement + Test	Result - Remark	Verdict
S.2	Test procedure		N/A
S.3	Examples of waveforms during impulse testing		N/A
T	ANNEX T, GUIDANCE ON PROTECTION AGAINST INGRESS OF WATER (see 1.1.2)		N/A
		See separate test report	—
U	ANNEX U, INSULATED WINDING WIRES FOR USE WITHOUT INTERLEAVED INSULATION (see 2.10.5.4)		N/A
		See separate test report	—
V	ANNEX V, AC POWER DISTRIBUTION SYSTEMS (see 1.6.1)		N/A
		DC equipment.	
V.1	Introduction		N/A
V.2	TN power distribution systems		N/A
W	ANNEX W, SUMMATION OF TOUCH CURRENTS		N/A
		DC equipment	
W.1	Touch current from electronic circuits		N/A
W.1.1	Floating circuits		N/A
W.1.2	Earthed circuits		N/A
W.2	Interconnection of several equipments		N/A
W.2.1	Isolation		N/A
W.2.2	Common return, isolated from earth		N/A
W.2.3	Common return, connected to protective earth		N/A
X	ANNEX X, MAXIMUM HEATING EFFECT IN TRANSFORMER TESTS (see clause C.1)		N/A
		No transformers outside the AC Listed Power Supply	
X.1	Determination of maximum input current		N/A
X.2	Overload test procedure		N/A
Y	ANNEX Y, ULTRAVIOLET LIGHT CONDITIONING TEST (see 4.3.13.3)		N/A
		No UV	
Y.1	Test apparatus		N/A
Y.2	Mounting of test samples		N/A
Y.3	Carbon-arc light-exposure apparatus		N/A

EN 60950-1			
Clause	Requirement + Test	Result - Remark	Verdict
Y.4	Xenon-arc light exposure apparatus :		N/A
Z	ANNEX Z, OVERVOLTAGE CATEGORIES (see 2.10.3.2 and Clause G.2)		N/A
AA	ANNEX AA, MANDREL TEST (see 2.10.5.8)		N/A
BB	ANNEX BB, CHANGES IN THE SECOND EDITION		—

EN 60950-1			
Clause	Requirement + Test	Result - Remark	Verdict

EN 60950-1:2006 – CENELEC COMMON MODIFICATIONS						
Contents	Add the following annexes: Annex ZA (normative) Normative references to international publications with their corresponding European publications Annex ZB (normative) Special national conditions Annex ZC (informative) A-deviations					P
General	Delete all the “country” notes in the reference document according to the following list: 1.4.8 Note 2 1.5.1 Note 2 & 3 1.5.7.1 Note 1.5.8 Note 2 1.5.9.4 Note 1.7.2.1 Note 4, 5 & 6 2.2.3 Note 2.2.4 Note 2.3.2 Note 2.3.2.1 Note 2 2.3.4 Note 2 2.6.3.3 Note 2 & 3 2.7.1 Note 2.10.3.2 Note 2 2.10.5.13 Note 3 3.2.1.1 Note 3.2.4 Note 3 2.5.1 Note 2 4.3.6 Note 1 & 2 4.7 Note 4 4.7.2.2 Note 4.7.3.1 Note 2 5.1.7.1 Note 3 & 4 5.3.7 Note 1 6 Note 2 & 5 6.1.2.1 Note 2 6.1.2.2 Note 6.2.2 Note 6 2.2.1 Note 2 6.2.2.2 Note 7.1 Note 3 7.2 Note 7.3 Note 1 & 2 G.2.1 Note 2 Annex H Note 2					P
1.3.Z1	Add the following subclause: 1.3.Z1 Exposure to excessive sound pressure The apparatus shall be so designed and constructed as to present no danger when used for its intended purpose, either in normal operating conditions or under fault conditions, particularly providing protection against exposure to excessive sound pressures from headphones or earphones. NOTE Z1 A new method of measurement is described in EN 50332-1, Sound system equipment: Headphones and earphones associated with portable audio equipment - Maximum sound pressure level measurement methodology and limit considerations - Part 1: General method for “one package equipment”, and in EN 50332-2, Sound system equipment: Headphones and earphones associated with portable audio equipment - Maximum sound pressure level measurement methodology and limit considerations - Part 2: Guidelines to associate sets with headphones coming from different manufacturers.					N/A
1.5.1	Add the following NOTE: NOTE Z1 The use of certain substances in electrical and electronic equipment is restricted within the EU: see Directive 2002/95/EC					N/A
1.7.2.1	Add the following NOTE: NOTE Z1 In addition, the instructions shall include, as far as applicable, a warning that excessive sound pressure from earphones and headphones can cause hearing loss					N/A

EN 60950-1															
Clause	Requirement + Test	Result - Remark	Verdict												
EN 60950-1:2006 – CENELEC COMMON MODIFICATIONS															
2.7.1	<p>Replace the subclause as follows:</p> <p>Basic requirements</p> <p>To protect against excessive current, short-circuits and earth faults in PRIMARY CIRCUITS, protective devices shall be included either as integral parts of the equipment or as parts of the building installation, subject to the following, a), b) and c):</p> <p>a) except as detailed in b) and c), protective devices necessary to comply with the requirements of 5.3 shall be included as parts of the equipment;</p> <p>b) for components in series with the mains input to the equipment such as the supply cord, appliance coupler, r.f.i. filter and switch, short-circuit and earth fault protection may be provided by protective devices in the building installation;</p> <p>c) it is permitted for PLUGGABLE EQUIPMENT TYPE B or PERMANENTLY CONNECTED EQUIPMENT, to rely on dedicated overcurrent and short-circuit protection in the building installation, provided that the means of protection, e.g. fuses or circuit breakers, is fully specified in the installation instructions.</p> <p>If reliance is placed on protection in the building installation, the installation instructions shall so state, except that for PLUGGABLE EQUIPMENT TYPE A the building installation shall be regarded as providing protection in accordance with the rating of the wall socket outlet.</p>		N/A												
2.7.2	This subclause has been declared 'void'.		N/A												
3.2.3	Delete the NOTE in Table 3A, and delete also in this table the conduit sizes in parentheses.		N/A												
3.2.5.1	<p>Replace "60245 IEC 53" by "H05 RR-F";</p> <p>"60227 IEC 52" by "H03 VV-F or H03 VVH2-F";</p> <p>"60227 IEC 53" by "H05 VV-F or H05 VVH2-F2".</p> <p>In Table 3B, replace the first four lines by the following:</p> <table border="1"> <tr> <td>Up to and including 6</td><td></td><td>0,75 ^{a)}</td><td></td></tr> <tr> <td>Over 6 up to and including 10</td><td>(0,75) ^{b)}</td><td>1,0</td><td></td></tr> <tr> <td>Over 10 up to and including 16</td><td>(1,0) ^{c)}</td><td>1,5</td><td></td></tr> </table> <p>In the conditions applicable to Table 3B delete the words "in some countries" in condition ^{a)}.</p> <p>In NOTE 1, applicable to Table 3B, delete the second sentence.</p>	Up to and including 6		0,75 ^{a)}		Over 6 up to and including 10	(0,75) ^{b)}	1,0		Over 10 up to and including 16	(1,0) ^{c)}	1,5			N/A
Up to and including 6		0,75 ^{a)}													
Over 6 up to and including 10	(0,75) ^{b)}	1,0													
Over 10 up to and including 16	(1,0) ^{c)}	1,5													
3.3.4	<p>In Table 3D, delete the fourth line: conductor sizes for 10 to 13 A, and replace with the following:</p> <table border="1"> <tr> <td>Over 10 up to and including 16</td><td>1,5 to 2,5</td><td>1,5 to 4</td><td></td></tr> </table> <p>Delete the fifth line: conductor sizes for 13 to 16 A.</p>	Over 10 up to and including 16	1,5 to 2,5	1,5 to 4			N/A								
Over 10 up to and including 16	1,5 to 2,5	1,5 to 4													
4.3.13.6	<p>Add the following NOTE:</p> <p>NOTE Z1 Attention is drawn to 1999/519/EC: Council Recommendation on the limitation of exposure of the general public to electromagnetic fields 0 Hz to 300 GHz. Standards taking into account this Recommendation which demonstrate compliance with the applicable EU Directive are indicated in the OJEC.</p>		N/A												

EN 60950-1			
Clause	Requirement + Test	Result - Remark	Verdict
EN 60950-1:2006 – CENELEC COMMON MODIFICATIONS			
Annex H	<p>Replace the last paragraph of this annex by:</p> <p>At any point 10 cm from the surface of the OPERATOR ACCESS AREA, the dose rate shall not exceed 1 μSv/h (0,1 mR/h) (see NOTE). Account is taken of the background level.</p> <p>Replace the notes as follows:</p> <p>NOTE These values appear in Directive 96/29/Euratom.</p> <p>Delete NOTE 2.</p>		N/A
Bibliography	Additional EN standards.		—



ZA	NORMATIVE REFERENCES TO INTERNATIONAL PUBLICATIONS WITH THEIR CORRESPONDING EUROPEAN PUBLICATIONS	—
----	---------------------------------------------------------------------------------------------------	---

ZB	SPECIAL NATIONAL CONDITIONS	N/A
1.2.4.1	In Denmark , certain types of Class I appliances (see 3.2.1.1) may be provided with a plug not establishing earthing conditions when inserted into Danish socket-outlets.	N/A
1.5.7.1	In Finland, Norway and Sweden , resistors bridging BASIC INSULATION in CLASS I PLUGGABLE EQUIPMENT TYPE A must comply with the requirements in 1.5.7.2.	N/A
1.5.8	In Norway , due to the IT power system used (see annex V, Figure V.7), capacitors are required to be rated for the applicable line-to-line voltage (230 V).	N/A
1.5.9.4	In Finland, Norway and Sweden , the third dashed sentence is applicable only to equipment as defined in 6.1.2.2 of this annex.	N/A
1.7.2.1	<p>In Finland, Norway and Sweden, CLASS I PLUGGABLE EQUIPMENT TYPE A intended for connection to other equipment or a network shall, if safety relies on connection to protective earth or if surge suppressors are connected between the network terminals and accessible parts, have a marking stating that the equipment must be connected to an earthed mains socket-outlet.</p> <p>The marking text in the applicable countries shall be as follows:</p> <p>In Finland: "Laite on liitettävä suojamaadoituskoskettimilla varustettuun pistorasiaan"</p> <p>In Norway: "Apparatet må tilkoples jordet stikkontakt"</p> <p>In Sweden: "Apparaten skall anslutas till jordat uttag"</p>	N/A
1.7.5	In Denmark , socket-outlets for providing power to other equipment shall be in accordance with the Heavy Current Regulations, Section 107-2-D1, Standard Sheet DK 1-3a, DK 1-5a or DK 1-7a, when used on Class I equipment. For STATIONARY EQUIPMENT the socket-outlet shall be in accordance with Standard Sheet DK 1-1b or DK 1-5a.	N/A
2.2.4	In Norway , for requirements see 1.7.2.1, 6.1.2.1 and 6.1.2.2 of this annex.	N/A
2.3.2	In Finland, Norway and Sweden there are additional requirements for the insulation. See 6.1.2.1 and 6.1.2.2 of this annex.	N/A
2.3.4	In Norway , for requirements see 1.7.2.1, 6.1.2.1 and 6.1.2.2 of this annex.	N/A

EN 60950-1																											
Clause	Requirement + Test	Result - Remark	Verdict																								
EN 60950-1:2006 – CENELEC COMMON MODIFICATIONS																											
2.6.3.3	In the United Kingdom , the current rating of the circuit shall be taken as 13 A, not 16 A.		N/A																								
2.7.1	In the United Kingdom , to protect against excessive currents and short-circuits in the PRIMARY CIRCUIT of DIRECT PLUG-IN EQUIPMENT, tests according to 5.3 shall be conducted, using an external protective device rated 30 A or 32 A. If these tests fail, suitable protective devices shall be included as integral parts of the DIRECT PLUG-IN EQUIPMENT, so that the requirements of 5.3 are met.		N/A																								
2.10.5.13	In Finland, Norway and Sweden , there are additional requirements for the insulation, see 6.1.2.1 and 6.1.2.2 of this annex.		N/A																								
3.2.1.1	<p>In Switzerland, supply cords of equipment having a RATED CURRENT not exceeding 10 A shall be provided with a plug complying with SEV 1011 or IEC 60884-1 and one of the following dimension sheets:</p> <table> <tr> <td>SEV 6532-2.1991</td><td>Plug Type 15</td><td>3P+N+PE</td><td>250/400 V, 10 A</td></tr> <tr> <td>SEV 6533-2.1991</td><td>Plug Type 11</td><td>L+N</td><td>250 V, 10 A</td></tr> <tr> <td>SEV 6534-2.1991</td><td>Plug Type 12</td><td>L+N+PE</td><td>250 V, 10 A</td></tr> </table> <p>In general, EN 60309 applies for plugs for currents exceeding 10 A. However, a 16 A plug and socket-outlet system is being introduced in Switzerland, the plugs of which are according to the following dimension sheets, published in February 1998:</p> <table> <tr> <td>SEV 5932-2.1998</td><td>Plug Type 25</td><td>3L+N+PE</td><td>230/400 V, 16 A</td></tr> <tr> <td>SEV 5933-2.1998</td><td>Plug Type 21</td><td>L+N</td><td>250 V, 16 A</td></tr> <tr> <td>SEV 5934-2.1998</td><td>Plug Type 23</td><td>L+N+PE</td><td>250 V, 16 A</td></tr> </table>	SEV 6532-2.1991	Plug Type 15	3P+N+PE	250/400 V, 10 A	SEV 6533-2.1991	Plug Type 11	L+N	250 V, 10 A	SEV 6534-2.1991	Plug Type 12	L+N+PE	250 V, 10 A	SEV 5932-2.1998	Plug Type 25	3L+N+PE	230/400 V, 16 A	SEV 5933-2.1998	Plug Type 21	L+N	250 V, 16 A	SEV 5934-2.1998	Plug Type 23	L+N+PE	250 V, 16 A		N/A
SEV 6532-2.1991	Plug Type 15	3P+N+PE	250/400 V, 10 A																								
SEV 6533-2.1991	Plug Type 11	L+N	250 V, 10 A																								
SEV 6534-2.1991	Plug Type 12	L+N+PE	250 V, 10 A																								
SEV 5932-2.1998	Plug Type 25	3L+N+PE	230/400 V, 16 A																								
SEV 5933-2.1998	Plug Type 21	L+N	250 V, 16 A																								
SEV 5934-2.1998	Plug Type 23	L+N+PE	250 V, 16 A																								
3.2.1.1	<p>In Denmark, supply cords of single-phase equipment having a rated current not exceeding 13 A shall be provided with a plug according to the Heavy Current Regulations, Section 107-2-D1.</p> <p>CLASS I EQUIPMENT provided with socket-outlets with earth contacts or which are intended to be used in locations where protection against indirect contact is required according to the wiring rules shall be provided with a plug in accordance with standard sheet DK 2-1a or DK 2-5a.</p> <p>If poly-phase equipment and single-phase equipment having a RATED CURRENT exceeding 13 A is provided with a supply cord with a plug, this plug shall be in accordance with the Heavy Current Regulations, Section 107-2-D1 or EN 60309-2.</p>		N/A																								
3.2.1.1	<p>In Spain, supply cords of single-phase equipment having a rated current not exceeding 10 A shall be provided with a plug according to UNE 20315:1994.</p> <p>Supply cords of single-phase equipment having a rated current not exceeding 2,5 A shall be provided with a plug according to UNE-EN 50075:1993.</p> <p>CLASS I EQUIPMENT provided with socket-outlets with earth contacts or which are intended to be used in locations where protection against indirect contact is required according to the wiring rules, shall be provided with a plug in accordance with standard UNE 20315:1994.</p> <p>If poly-phase equipment is provided with a supply cord with a plug, this plug shall be in accordance with UNE-EN 60309-2.</p>		N/A																								

EN 60950-1			
Clause	Requirement + Test	Result - Remark	Verdict
EN 60950-1:2006 – CENELEC COMMON MODIFICATIONS			
3.2.1.1	<p>In the United Kingdom, apparatus which is fitted with a flexible cable or cord and is designed to be connected to a mains socket conforming to BS 1363 by means of that flexible cable or cord and plug, shall be fitted with a 'standard plug' in accordance with Statutory Instrument 1768:1994 - The Plugs and Sockets etc. (Safety) Regulations 1994, unless exempted by those regulations.</p> <p>NOTE 'Standard plug' is defined in SI 1768:1994 and essentially means an approved plug conforming to BS 1363 or an approved conversion plug.</p>		N/A
3.2.1.1	In Ireland , apparatus which is fitted with a flexible cable or cord and is designed to be connected to a mains socket conforming to I.S. 411 by means of that flexible cable or cord and plug, shall be fitted with a 13 A plug in accordance with Statutory Instrument 525:1997 - National Standards Authority of Ireland (section 28) (13 A Plugs and Conversion Adaptors for Domestic Use) Regulations 1997.		N/A
3.2.4	In Switzerland , for requirements see 3.2.1.1 of this annex.		N/A
3.2.5.1	In the United Kingdom , a power supply cord with conductor of 1,25 mm ² is allowed for equipment with a rated current over 10 A and up to and including 13 A.		N/A
3.3.4	<p>In the United Kingdom, the range of conductor sizes of flexible cords to be accepted by terminals for equipment with a RATED CURRENT of over 10 A up to and including 13 A is:</p> <ul style="list-style-type: none"> • 1,25 mm² to 1,5 mm² nominal cross-sectional area. 		N/A
4.3.6	In the United Kingdom , the torque test is performed using a socket outlet complying with BS 1363 part 1:1995, including Amendment 1:1997 and Amendment 2:2003 and the plug part of DIRECT PLUG-IN EQUIPMENT shall be assessed to BS 1363: Part 1, 12.1, 12.2, 12.3, 12.9, 12.11, 12.12, 12.13, 12.16 and 12.17, except that the test of 12.17 is performed at not less than 125 °C. Where the metal earth pin is replaced by an Insulated Shutter Opening Device (ISOD), the requirements of clauses 22.2 and 23 also apply.		N/A
4.3.6	In Ireland , DIRECT PLUG-IN EQUIPMENT is known as plug similar devices. Such devices shall comply with Statutory Instrument 526:1997 - National Standards Authority of Ireland (Section 28) (Electrical plugs, plug similar devices and sockets for domestic use) Regulations, 1997.		N/A
5.1.7.1	<p>In Finland, Norway and Sweden TOUCH CURRENT measurement results exceeding 3,5 mA r.m.s. are permitted only for the following equipment:</p> <ul style="list-style-type: none"> • STATIONARY PLUGGABLE EQUIPMENT TYPE A that <ul style="list-style-type: none"> ◦ is intended to be used in a RESTRICTED ACCESS LOCATION where equipotential bonding has been applied, for example, in a telecommunication centre; and ◦ has provision for a permanently connected PROTECTIVE EARTHING CONDUCTOR; and ◦ is provided with instructions for the installation of that conductor by a SERVICE PERSON; • STATIONARY PLUGGABLE EQUIPMENT TYPE B; • STATIONARY PERMANENTLY CONNECTED EQUIPMENT. 		N/A

EN 60950-1			
Clause	Requirement + Test	Result - Remark	Verdict
EN 60950-1:2006 – CENELEC COMMON MODIFICATIONS			
6.1.2.1	<p>In Finland, Norway and Sweden, add the following text between the first and second paragraph of the compliance clause:</p> <p>If this insulation is solid, including insulation forming part of a component, it shall at least consist of either</p> <ul style="list-style-type: none"> - two layers of thin sheet material, each of which shall pass the electric strength test below, or - one layer having a distance through insulation of at least 0,4 mm, which shall pass the electric strength test below. <p>If this insulation forms part of a semiconductor component (e.g. an optocoupler), there is no distance through insulation requirement for the insulation consisting of an insulating compound completely filling the casing, so that CLEARANCES and CREEPAGE DISTANCES do not exist, if the component passes the electric strength test in accordance with the compliance clause below and in addition</p> <ul style="list-style-type: none"> - passes the tests and inspection criteria of 2.10.11 with an electric strength test of 1,5 kV multiplied by 1,6 (the electric strength test of 2.10.10 shall be performed using 1,5 kV), and - is subject to ROUTINE TESTING for electric strength during manufacturing, using a test voltage of 1,5 kV. <p>It is permitted to bridge this insulation with a capacitor complying with EN 132400:1994, subclass Y2.</p> <p>A capacitor classified Y3 according to EN 132400:1994, may bridge this insulation under the following conditions:</p> <ul style="list-style-type: none"> - the insulation requirements are satisfied by having a capacitor classified Y3 as defined by EN 132400, which in addition to the Y3 testing, is tested with an impulse test of 2,5 kV defined in EN 60950-1:2006, 6.2.2.1; - the additional testing shall be performed on all the test specimens as described in EN 132400; - the impulse test of 2,5 kV is to be performed before the endurance test in EN 132400, in the sequence of tests as described in EN 132400. 		N/A
6.1.2.2	<p>In Finland, Norway and Sweden, the exclusions are applicable for PERMANENTLY CONNECTED EQUIPMENT, PLUGGABLE EQUIPMENT TYPE B and equipment intended to be used in a RESTRICTED ACCESS LOCATION where equipotential bonding has been applied, e.g. in a telecommunication centre, and which has provision for a permanently connected PROTECTIVE EARTHING CONDUCTOR and is provided with instructions for the installation of that conductor by a SERVICE PERSON.</p>		N/A
7.2	<p>In Finland, Norway and Sweden, for requirements see 6.1.2.1 and 6.1.2.2 of this annex.</p> <p>The term TELECOMMUNICATION NETWORK in 6.1.2 being replaced by the term CABLE DISTRIBUTION SYSTEM.</p>		N/A
7.3	<p>In Norway and Sweden, there are many buildings where the screen of the coaxial cable is normally not connected to the earth in the building installation.</p>		N/A
7.3	<p>In Norway, for installation conditions see EN 60728-11:2005.</p>		N/A

EN 60950-1			
Clause	Requirement + Test	Result - Remark	Verdict
EN 60950-1:2006 – CENELEC COMMON MODIFICATIONS			
ZC	A-DEVIATIONS (informative)		N/A
1.5.1	Sweden (Ordinance 1990:944) Add the following: NOTE In Sweden, switches containing mercury are not permitted.		N/A
1.5.1	Switzerland (Ordinance on environmentally hazardous substances SR 814.081, Annex 1.7, Mercury - Annex 1.7 of SR 814.81 applies for mercury.) Add the following: NOTE In Switzerland, switches containing mercury such as thermostats, relays and level controllers are not allowed.		N/A
1.7.2.1	Denmark (Heavy Current Regulations) Supply cords of CLASS I EQUIPMENT, which is delivered without a plug, must be provided with a visible tag with the following text: <p style="text-align: center;">Vigtigt! Lederen med grøn/gul isolation må kun tilsluttes en klemme mærket</p>  eller  If essential for the safety of the equipment, the tag must in addition be provided with a diagram, which shows the connection of the other conductors, or be provided with the following text: “For tilslutning af de øvrige ledere, se medfølgende installationsvejledning.”		N/A
1.7.2.1	Germany (Gesetz über technische Arbeitsmittel und Verbraucherprodukte (Geräte- und Produktsicherheitsgesetz – GPSG) [Law on technical labour equipment and consumer products], of 6th January 2004, Section 2, Article 4, Clause (4), Item 2). If for the assurance of safety and health certain rules during use, amending or maintenance of a technical labour equipment or readymade consumer product are to be followed, a manual in German language has to be delivered when placing the product on the market. Of this requirement, rules for use even only by SERVICE PERSONS are not exempted.		N/A
1.7.5	Denmark (Heavy Current Regulations) With the exception of CLASS II EQUIPMENT provided with a socket outlet in accordance with the Heavy Current Regulations, Section 107-2-D1, Standard Sheet DK 1-4a, CLASS II EQUIPMENT shall not be fitted with socket-outlets for providing power to other equipment.		N/A
1.7.13	Switzerland (Ordinance on chemical hazardous risk reduction SR 814.81, Annex 2.15 Batteries) Annex 2.15 of SR 814.81 applies for batteries.		N/A
5.1.7.1	Denmark (Heavy Current Regulations, Chapter 707, clause 707.4) TOUCH CURRENT measurement results exceeding 3,5 mA r.m.s. are permitted only for PERMANENTLY CONNECTED EQUIPMENT and PLUGGABLE EQUIPMENT TYPE B.		N/A

EN 60950-1			
Clause	Requirement + Test	Result - Remark	Verdict

TABLES					
1.5.1	TABLE: List of critical components				
Object/part No.	Manufacturer/ trademark	Type/model	Technical data	Standard (Edition / year)	Mark(s) of conformity ¹⁾
Enclosure	Any	Any	16cm length x 8cm width x 3 cm height. Outdoor UV Stabilized Plastic. Complete enclosure with no openings. All voltage levels are within 15VDC, hence, no risk of fire. The enclosure is an electrical enclosure.	-	-
Power Supply Adapter	Ubiquiti Networks, Inc.	UBI-POE-15-8	Input: 100- 240VAC 50-60Hz 0.3A. Output: 14VDC 0.8A	Listed	UL, CE, FCC
¹⁾ An asterisk indicates a mark which assures the agreed level of surveillance					
Supplementary information:					

EN 60950-1						
Clause	Requirement + Test				Result - Remark	Verdict
1.6.2	TABLE: Electrical data (in normal conditions)					
U (V)	I (A)	I _{rated} (A)	P (W)	Fuse #	I _{fuse} (A)	Condition/status
12.7	0.18	0.4	2.0			Normal Load/Maximum
15.0	0.15	0.4	2.0			Normal Load/Maximum
18.0	0.21	0.4	3.5			Normal Load/Maximum
Supplementary information:						

2.10.3 and 2.10.4	TABLE: Clearance and creepage distance measurements						P
Clearance (cl) and creepage distance (cr) at/of/between:		U peak (V)	U r.m.s. (V)	Required cl (mm)	cl (mm)	Required cr (mm)	cr (mm)
Functional:							
		15VDC		0.2	>0.2	0.4	>0.4
Supplementary information:							

2.10.5	TABLE: Distance through insulation measurements					N/A
Distance through insulation (DTI) at/of:		U peak (V)	U rms (V)	Test voltage (V)	Required DTI (mm)	DTI (mm)
Supplementary information:						

EN 60950-1									
Clause	Requirement + Test					Result - Remark			Verdict
4.3.8	TABLE: Batteries								N/A
The tests of 4.3.8 are applicable only when appropriate battery data is not available									
Is it possible to install the battery in a reverse polarity position?									
	Non-rechargeable batteries			Rechargeable batteries					
	Discharging		Un-intentional charging	Charging		Discharging		Reversed charging	
	Meas. current	Manuf. Specs.		Meas. current	Manuf. Specs.	Meas. current	Manuf. Specs.	Meas. current	Manuf. Specs.
Max. current during normal condition									
Max. current during fault condition									
Test results:									Verdict
- Chemical leaks									
- Explosion of the battery									
- Emission of flame or expulsion of molten metal									
- Electric strength tests of equipment after completion of tests									
Supplementary information: No Batteries incorporated.									

EN 60950-1			
Clause	Requirement + Test	Result - Remark	Verdict

4.5	TABLE: Thermal requirements						P
	Supply voltage (V)	18.0					—
	Ambient T_{min} (°C)	23					—
	Ambient T_{max} (°C)	75					—
Maximum measured temperature T of part/at::		T (°C)					Allowed T_{max} (°C)
DC Input Connector		36	88				95
PWB near M-Tek chip		40	92				95
Enclosure-Top		33	85				95
Ambient		23	75				75
Supplementary information: Temperature recorded in the second column is normalized with by adding 52 to each highest temperature recorded during test.							
Operating temperature: 75°C. Ambient max 23°C. Normalized. 75°C - 23°C =52°C							
Temperature T of winding:		t_1 (°C)	R_1 (Ω)	t_2 (°C)	R_2 (Ω)	T (°C)	Allowed T_{max} (°C)
Supplementary information:							

4.5.5	TABLE: Ball pressure test of thermoplastic parts			N/A
	Allowed impression diameter (mm): ≤ 2 mm			—
Part		Test temperature (°C)	Impression diameter (mm)	
Supplementary information:				

4.7	TABLE: Resistance to fire					N/A
Part		Manufacturer of material	Type of material	Thickness (mm)	Flammability class	Evidence
Supplementary information:						

EN 60950-1				
Clause	Requirement + Test			Verdict
5.2	TABLE: Electric strength tests, impulse tests and voltage surge tests			N/A
Test voltage applied between:		Voltage shape (AC, DC, impulse, surge)	Test voltage (V)	Breakdown Yes / No
Functional:				
Basic/supplementary:				
Reinforced:				
Supplementary information:				

5.3	TABLE: Fault condition tests					N/A
	Ambient temperature (°C)					—
	Power source for EUT: Manufacturer, model/type, output rating					—
Component No.	Fault	Supply voltage (V)	Test time	Fuse #	Fuse current (A)	Observation
Supplementary information:						

List of test equipment used:

Company Name	Ubiquiti		
Project	Networks, Inc.		
#	81509		
Model # of Unit	M2 and M5		
Project Engineer	Shaima Adin		
Date	June 23, 2009		
	MET Equipment #	Equipment	Calibration Due Date
1	3U1002	AC/DC Current Probe	2/14/2010
5	3U1020	DMM	2/14/2010
10	3U1043	Hexanes	FVBU
11	3U1045	Hygrometer	1/14/2010
12	3U1047	DC Power Supply	FVBU
14	3U1055	Temperature Reader	4/28/2009

*NCR = No Calibration Required.

*FVBU = Functional Verification Before Use. Instrument is used with calibrated instruments.

Enclosure 1: Other Country National Differences

KOREA NATIONAL DIFFERENCES			
Clause	Requirement + Test	Result - Remark	Verdict
1.5.101	Plugs for the connection of the apparatus to the supply mains shall comply with the Korean requirement (KSC 8305).		N/A
8 : EMC	The apparatus shall comply with the relevant CISPR standards		N/A

Enclosure 2: Photographs (Figures) and/or Illustrations

FIGURES

Figure 1: M2 Exterior.



Enclosure 2: Photographs (Figures) and/or Illustrations

FIGURES (Continued)

Figure 2: M2 Interior

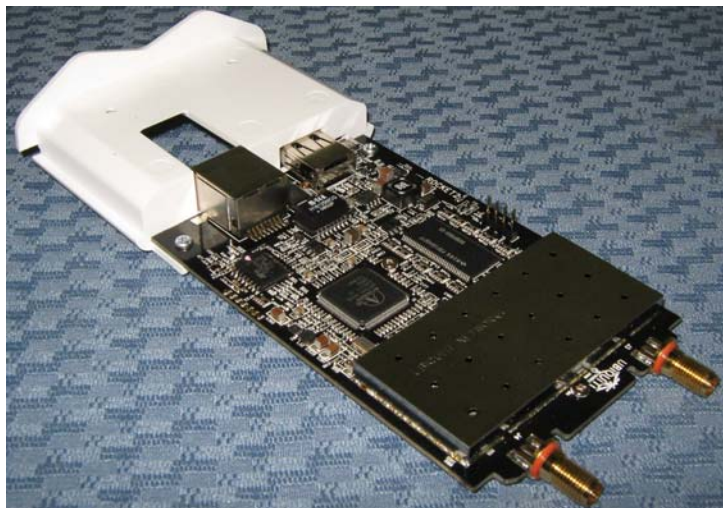
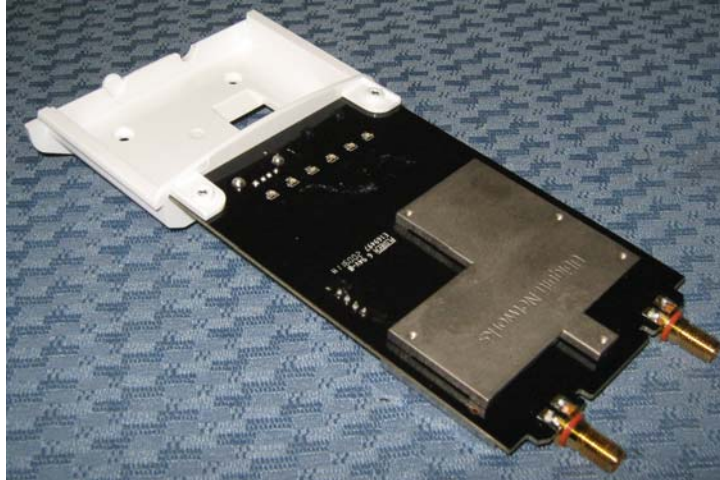


Figure 3: Power Supply Adapter.

Figure 3: Power Supply Adapter.

